



REVISION TABLE

Change Point	Ref. PN.	PN.	Part Description	Date	Change Notes	Author
		MP-0000xxxxx	QIG, 4960R, Singtel, EN, Color, Single, R0, v0	22.11.2020	Initial Release	MB

Printing Colors

BASE COLORS



CMYK#00000000

CMYK#FF0000

PANTONE 685C

PANTONE 871C



CMYK#CCCCCC

CMYK#333333

CMYK#FFFF00

CMYK#00FF00

CMYK#00FFFF

CMYK#FF0000

CMYK#000000

Air 4960R / Singtel / Single Pack (Printed Material Specification)

Flat dimension	200mm x 100mm
Dimension after binding	100mm x 100mm
Pages	12 pages
Cover Printing Color	colour printing
Inner Printing Color	colour printing
Cover page Material	128g copperplate paper
Inner pages Material	128g copperplate paper
Cover Pages Coating	varnishing
Inner pages Coating	varnishing
Binding & Folding Process	Booklet type folding & 2 pcs stable biding
Output lpi	200 Lpi
Tolerance	L*W:+1mm/-1mm
Color Tolerance	ΔE=2 for Pantone ΔE=3 for CMYK
PART NUMBER	MP-0000xxxxx



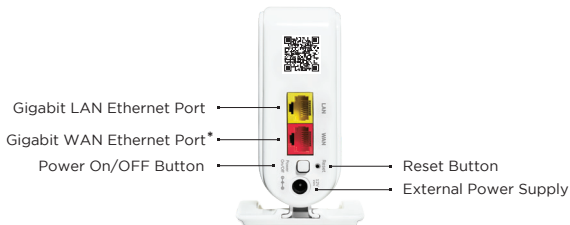
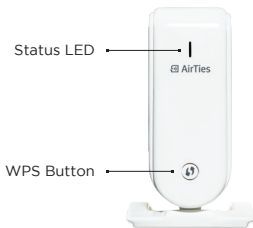
Air 4960R

AX5400 Wi-Fi 6 Router



USER MANUAL

PORTS and BUTTONS



* Ethernet (Internet) cable from your Internet Service Provider or modem should be plugged into WAN ethernet port of Air 4960R Router.

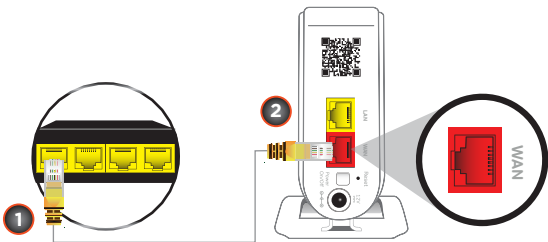


Please remove protective plastic cover from the products before installation.

INSTALLATION

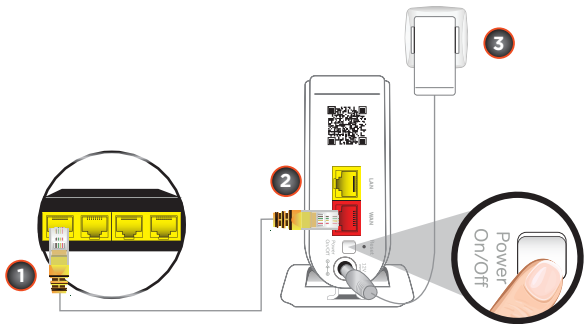
1

Connect the RJ45 Ethernet Cable to any LAN port on the ONT or ONR **1** and **WAN** port on Air 4960R Router **2**.



2

Plug the power adapter **3** first into Air 4960R and then to a power socket, turn on the unit.

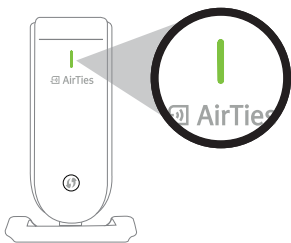


3

After few seconds Air 4960R LED will be first blinking white, then solid white. Wait until LED become solid green, that means your device is connected to internet and ready to use.

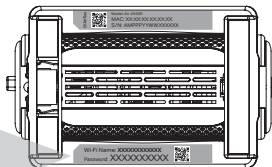


**up to
3 min.**



4

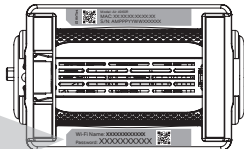
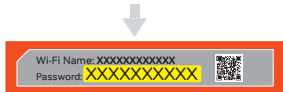
Default Wi-Fi Name and Password is indicated on the label under your Air 4960R unit.



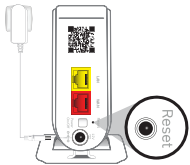
TIPS FOR BEST PERFORMANCE:

- Keep devices away from:
 - Potential sources of electrical interference. Equipment that may potentially cause interference include home security systems, microwaves and consumer electronic devices.
 - Large metal surfaces and objects.
 - Sources and areas of heat such as ovens and sun rooms as well as direct sun light.
- Please make sure to remove the protective plastic covers used on the device before first use.
- Please use the device in upright position. The openings are provided for ventilation, do not block or cover openings.
- Your device is designed to work indoors and under room temperature conditions only. Avoid placing the device to very cold, very hot, very humid or very dry locations inside your home.
- To change advanced settings on your device, you can access web UI with the credentials below by typing **http://masternode.local** or **http://air4960-router.local/** in the address field of your browser and press enter to display the login window:

- Username: admin
- Password: default Wi-Fi password on the label under your device



RETURNING TO FACTORY SETTINGS



To return the device to factory settings, press down on the reset button (in the small opening on the back shown above) for 5 seconds and release. A metal paperclip (with an extended tip) or strong toothpick are typically good choices for this task. When the reset process is triggered, the LED in the front will “blink rapidly” and the device will reboot to factory settings.

PRODUCT NOTICES

- Operational modes:

2.4 GHz: 802.11b, 802.11g, 802.11n (HT20), 802.11n (HT40),
802.11ac (VHT20), 802.11ac (VHT40), 802.11ax (HE20),
802.11ax (HE40)

5 GHz: 802.11a, 802.11n (HT20), 802.11n (HT40), 802.11ac (VHT20),
802.11ac (VHT40), 802.11ac (VHT80), 802.11ac (VHT160),
802.11ax (HE20), 802.11ax (HE40), 802.11ax (HE80),
802.11ax (HE160)

- Maximum power consumption of networked standby mode is 4.50 W.
- This device is restricted for indoor use.

This product makes use of software developed by the open source community. Any such software is licensed under the specific license terms applicable to that particular software (like GPL, LGPL etc). Detailed information on the applicable licenses and license terms can be found on the device's user interface.

By using this product, you acknowledge that you have reviewed such license terms and that you agree to be bound by them. Where such terms entitle you to the source code of said software, that source code will be made available at cost upon request from AirTies.

To obtain a copy of said source code, please send your request in writing via email to osrb@airties.com or via snail mail to:

AirTies Wireless Communications
Mithat Uluönlü Sokak No. 23 Esentepe,
P.K. 34394 Şişli İSTANBUL/Turkey

AirTies will mail to you a CD with the requested source code at the cost of CD preparation and shipping&handling. For details please contact osrb@airties.com

TROUBLESHOOTING

Condition	LED Color	LED Behavior	Timing
Power OFF	OFF	-	
Power ON, booting	White	Blinking	
Wireless network healthy	Green	Blinking	50 milliseconds OFF 5 seconds ON
Device configured as single wireless access point	Green	Solid	
Unconfigured mesh device	Blue	Blinking	4 seconds OFF 4 seconds ON
Weak connection to the wireless mesh network	Red	Solid	
No Internet	Red	Blinking	1/2 Second OFF 1/2 Second ON
Software upgrade	Blue	Blinking	1/2 second OFF 1/2 second ON

Explanation	Recommended Action(s)
Device is turned off.	Make sure the power button on the back is pressed and power supply unit is connected to the device.
	No action required. If the device was just powered on, please wait for at least 2 minutes for the device to boot up.
LED is steady green with a short blink every 5 seconds.	No action required.
Device is connected to the router/gateway with an ethernet cable and acts as a wireless access point. No other mesh devices are configured in the network.	No action required, more mesh devices can be added to the wireless mesh network if needed.
Device is not configured and connected to the wireless mesh network.	Configure the device using AirTies Vision app.
	Bring device closer to another device in the wireless mesh network.
Your internet connection is down.	Please check WAN ethernet cable connection between your modem and Air 4960R Router. If the issue persists, contact your Internet Service Provider.
Device is retrieving the latest software.	Wait for the upgrade to complete. Device will automatically start with the latest software.

MP-00000xxxxx



REV22112021