

Connected intelligence, the future of enterprise.

At GovWare, Singtel showcased a complete suite of future-ready enterprise solutions demonstrating Connected Intelligence in action, unifying networks, data, and AI.

Singtel stands by enterprises, delivering solutions that unlock real-time decisioning, scalable automation, and resilient ecosystems across industries—building future-proof resilience with connected intelligence.

The central pillars of Connected Intelligence:



Singtel 5G+: Ultra-reliable, low-latency connectivity—the performance backbone of the future-ready enterprise.



CUBE: Singtel's suite of secure connectivity solutions to support future-ready workforces.

Together, these technologies and their supporting innovations deliver connected intelligence that adapts, protects, and empowers the workforce of tomorrow, today.

Future of secure mobile work

With 5G connections projected to reach 5.5B devices by 2030¹ and 52% of vulnerabilities linked to initial access², securing the mobile workforce is urgent.



5G+ Mobile Workspace

Laptops stay securely connected anywhere via eSIM, delivering seamless, low-latency performance at all times in an infra-lite, mobility-first environment designed for hybrid work.



Mobile Workspace Manager

Puts every device in view, giving enterprises complete visibility and control over their digital workforce; while Enterprise Mobile Protect (EMP) detects and blocks viruses, malware, spyware, and phishing before they reach users.

¹ GSMA Mobile Economy Report, 2024

² CrowdStrike 2025 Global Threat Report

Verified connections, trusted interactions



Singtel Trusted Call

Singapore's only branded native caller ID verification service safeguards brand identity and reputation, so customers can answer with confidence—knowing it's really you.



SingVerify

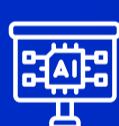
Provides password-less, stress-free access across enterprise systems through Singtel Federated eSIM Login via Telco APIs to prevent phishing risks and IT strain.

Singtel's connected intelligence solutions enable trusted connections, seamless mobility, and frictionless authentication for the secure mobile workforce of tomorrow, today.

Powering intelligent solutions with AI

AI is transforming how we work, accelerating innovation, automating processes, and unlocking new possibilities. But with every AI deployment comes new attack vectors, more endpoints, more data flows, and more complexity.

In today's digital-first enterprise, network disruption is not an option. Singtel's solutions bring connected intelligence to life, so businesses can power intelligent AI solutions and secure their enterprise today and tomorrow:



AI Studio—enables enterprise IT teams to build customised AI agents and workflows, streamlining operations.



AI-Ready Infrastructure—configurable, plug-and-play architecture that allows enterprises to deploy AI with confidence.



Borderless security with Hybrid Quantum-Safe Network

As quantum computing advances, today's encryption will be broken—putting the world's most sensitive data at risk. That's why defending enterprises with quantum-safe security starts today.

Singtel's Hybrid Quantum-Safe Network (QSN), first in the region, is a quantum-resilient shield built for a secure, connected world. It integrates advanced defences to protect AI-ready workloads while shielding enterprises' most valuable assets.



Combining Post-Quantum Cryptography (PQC) and Quantum Key Distribution (QKD), Singtel protects your infrastructure and critical data against both current attacks and near-future quantum decryption threats.



Seamless and secure connection in multiple sites across borders enables future-ready secure protection for multi-site operations without traditional point-to-point complexity.

Our future isn't only about today's attacks. It's also about tomorrow's risks.

The future of enterprise security has evolved: What's next?

Traditional defences are no longer enough. Today's enterprises need seamless connectivity, intelligent threat protection, and quantum-resilient infrastructure working as one unified system.

Build tomorrow's resilient enterprise today.

[Contact us](#)

**Ignite the Change
Hello Possibilities**